

SOLVENT RECYCLING EQUIPMENT

LS Series options

Vacuum Attachments



Vacuum attachment for LS55 shown here

Description:

JetVac is used to create a vacuum within the distillation unit. It can be used for all LS models; allows safe processing of solvents with boiling points up to 500° F.

AutoFill Option



Description:

Allows automatic filling of LS 15/55IIE from customer supplied waste tank. Comes complete with pump, flow meter, controls and top fill option.

Little Cooler Option



Description:

A self-contained water/glycol recirculation system to provide a closed loop water supply to the condenser, saving on water consumption and maintenance.

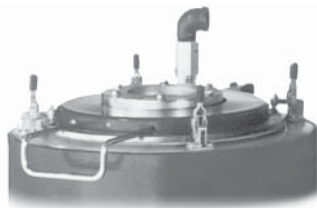
Stainless Steel Condensers



Description:

316 stainless steel shell and tube for demanding or very high purity applications.

System II Lid



Description:

Allows user to retrofit standard LS15/55E unit to use top fill option. Has sight glass to view fill process.

Drum Pump and TopFill option

Description (Drum Pump):

316 stainless steel drum pump with either air or electric explosionproof motor. Ideal for pumping flammable and non-flammable solvents.

Description (TopFill Option):

Connects pump to System II Lid allowing user to manually fill the LS15/55IIE with lid shut. Reduces exposure to hazardous vapors.



Stilbags / Stilpan



Description:

Convenient bag or pan option to remove residue with minimal operator contact. Helps maintain the long term efficiency of the LS equipment.

Standard Diameter Insert



Description:

Teflon® coated insert can be used with older units in which Teflon® has become damaged. Must use heat transfer oil with insert.

Scrapers



Description:

Scrapers are for removal of hardened residue. Solvent resistant, non-sparking, non-abrasive material will not harm Teflon® coated surfaces.

NEET Timer



Description:

Non-explosionproof electric timer (24hr.) terminates distillation process automatically. Must be installed outside the hazardous area.

TSOT Timer



Description:

Non-explosionproof timer allows automatic shut off of LS unit by time (16 hr. timer) or temperature. Can run two devices. Must be installed outside the hazardous area.

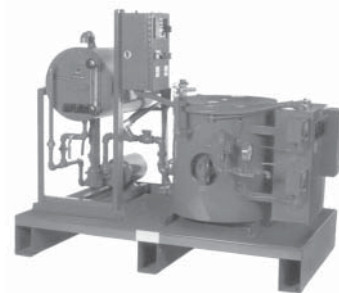
Explosionproof Timer

Description:

Explosionproof electric timer (16hr.). Automatically terminates distillation process based on customer adjustable preset time. Timer is standard on System II units.

(not shown)

Chillers / Boilers



FTI offers chiller packages for the LS-JrE, LS15E, LS55E. Boiler packages are available for the LS55 STE.

Description:

Chiller provides refrigerated recirculating fluid for vapor condensing.

Boiler is for users requiring the steam capability but do not have an in-plant steam source.



FINISH THOMPSON INC.

921 Greengarden Road • Erie, PA 16501-1591 U.S.A.
Ph 814-455-4478 • Fax 814-455-8518
Email fti@finishthompson.com • www.finishthompson.com



(Toll Free) 877.375.1290

7601 Stadium Drive Kalamazoo, MI 49009

www.flowtechfilters.com