

# FlowTech RT 150 (CDE) Multi Cartridge--Removable Tubesheet Filter Housing



The FlowTech RT150 and RTCDE multi-cartridge filter housings find wide use in applications where ease of cleaning is an important criteria. The housings are all 316L stainless and will provide extended service in the most demanding pharmaceutical, process chemical and food/beverage applications.

## DESCRIPTION

The RT filter housing is designed to be easily disassembled for quick and thorough cleaning.

- ▶ High temperature and pressure capabilities
- ▶ Accepts all standard filter cartridges
- ▶ Four bowl (filter cartridge) lengths available
- ▶ Easy cartridge change out
- ▶ Inlets, outlets, vents and drains to suit
- ▶ Several surface finishes available

## OPERATING CONDITIONS

- ▶ Design pressure: 150 psi standard (code or non-code)
- ▶ Design temp: 250°F (130°C) (o-ring material dependent)
- ▶ Flow capability: up to 320 gpm (cartridge dependent)

## SURFACE FINISHES (Interior/Exterior)

- ▶ Glass bead blast
- ▶ 120, 150 or 180 grit polish
- ▶ Electropolish
- ▶ Any combination of above

## MATERIALS

- ▶ All 316L stainless steel (Standard - many other

- ▶ O-ring seal: Teflon encapsulated  
Viton standard (all other commercial  
elastomers can be provided)

## STERILIZATION

- ▶ Steamable in-situ

## BOWL SIZES

- ▶ 10", 20", 30", and 40"



## CONNECTIONS

- ▶ Inlet/Outlet: NPTF, flange or sanitary
- ▶ Vents/Drains: NPTF, flange or sanitary

## CLOSURE

- ▶ Four swing bolts

## CARTRIDGE SEAL STYLES

- ▶ Code 7, 8, DOE, 1" NPT, etc. and custom

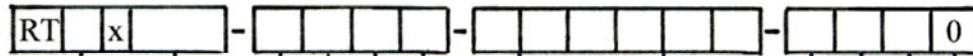
Note: See part numbering system for further details



FlowTech RT 150 (CDE)  
Multi Cartridge--Removable  
Tubesheet Filter Housing



150 PSI RATED...[ CODE or NON-CODE ]



NUMBER of FILTERS

3 = Three around  
4 = Four around

PRESSURE RATING

150 = 150 psi [standard]  
CDE = 150 psi Code Stamped

CONFIGURATION

L = Side Inlet/Bottom Outlet [straight]  
J = Side Inlet/Bottom Elbow Outlet  
X = Any special configuration  
T = Side inlet/outlet [inline-std]

CARTRIDGE LENGTH

1 = 10 inch  
2 = 20 inch  
3 = 30 inch  
4 = 40 inch

MATERIALS OF CONSTRUCTION

C = Carbon Steel  
L = 316L Stainless Steel  
A = Special Alloys  
S = 304 Stainless Steel

CARTRIDGE SEAL DESIGN

9 = 1 inch NPT [Mott C-18]  
7 = Code 7 [226 O-rings/bayonet lock/bomb fin]  
3 = Code 3 [222 O-rings/flat cap]  
8 = Code 8 [222 O-rings/bomb fin]  
2 = Code 2 [226 O-rings/bayonet lock/flat cap]  
5 = DOE [Double Open End]

O-RING MATERIAL

BN = Buna-N  
EP = EPDM  
VI = Viton  
TS = Teflon Encapsulated Silicone  
SI = Silicone  
NE = Neoprene  
EH = EPDM [High Temp]

CLOSURE

0 = Swing Bolts with coupling nuts [eye nuts available]

FINISH [Inside & outside]

2 = Mechanical Polish [120 grit]  
5 = Dairy Polish 3A [150 grit]  
8 = Sanitary Polish [180 grit]  
B = Glass Bead Blast  
P = Pickled & Passivated  
E = Electroplated  
S = Sanitary [electropolish over 180 grit polish]

VENT [In Cover]

0 = No Vent [standard]  
2 = ¼ inch NPT  
1 = 1/8 inch NPT  
4 = ½ inch NPT

DRAIN [At Tube Sheet]

N = No Drain  
2 = ¼ inch NPT  
1 = 1/8 inch NPT  
4 = ½ inch NPT

CONNECTION SIZE/TYPE

15 NF = 1 ½ inch NPTF  
20 NF = 2 inch NPTF  
15 FL = 1 ½ inch ANSI flange  
20 FL = 2 inch ANSI flange  
15 SA = 1 ½ inch sanitary flg  
20 SA = 2 inch sanitary flange

NOTE: Legs provided to suit.  
Housing drain standard  
[½" NPT]



877.375.1290

7601 Stadium Drive Kalamazoo, MI 49009

[www.flowtechfilters.com](http://www.flowtechfilters.com)

FlowTech RT 150 (CDE)  
Multi Cartridge--Removable  
Tubesheet Filter Housing



Removable Tube Sheet  
FilterVessel. . .4-around x 10"  
cartridges



877.375.1290

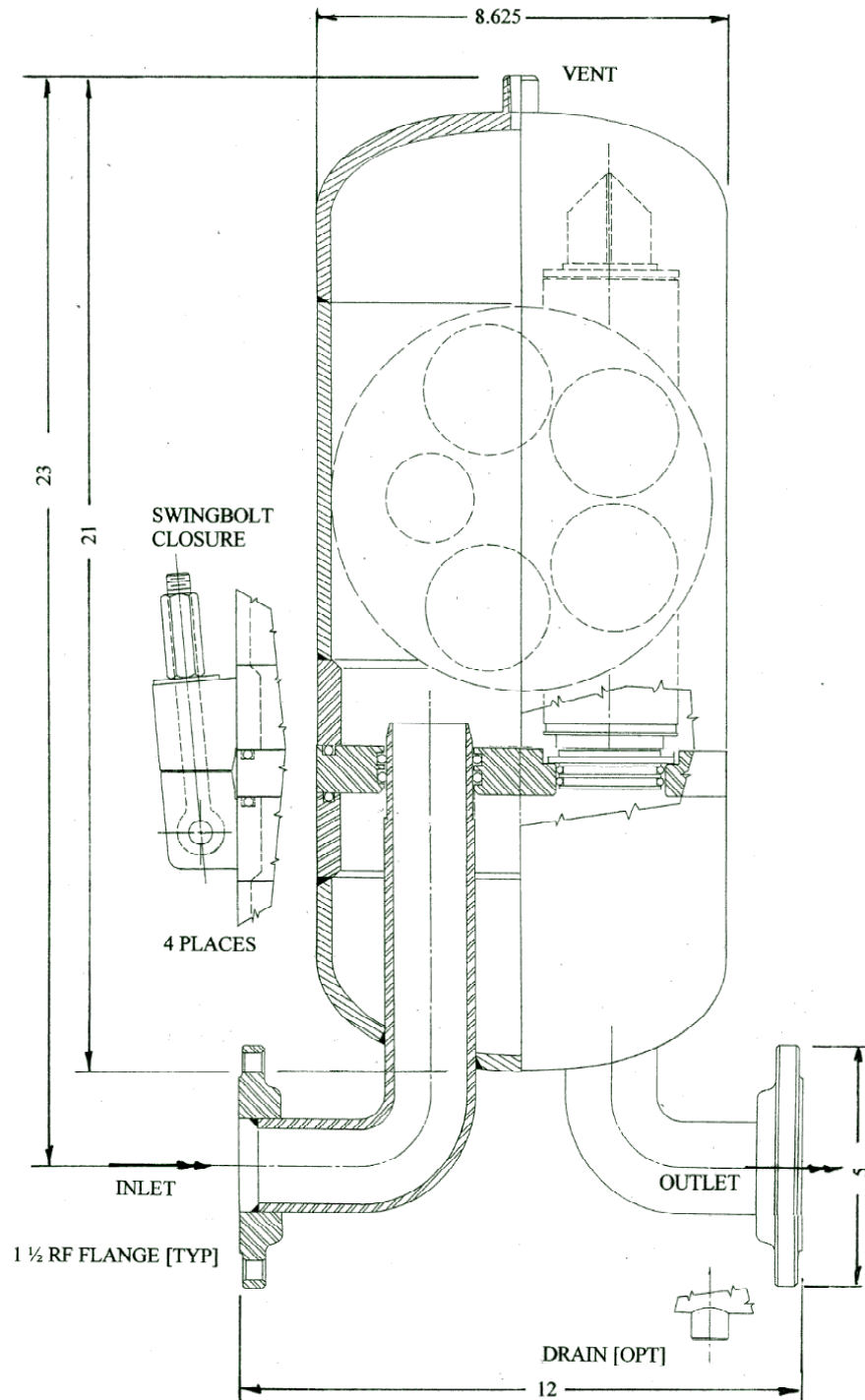
7601 Stadium Drive Kalamazoo, MI 49009

[www.flowtechfilters.com](http://www.flowtechfilters.com)

FlowTech RT 150 (CDE)  
Multi Cartridge--Removable  
Tubesheet Filter Housing



www.flowtechcorp.com



877.375.1290

7601 Stadium Drive Kalamazoo, MI 49009

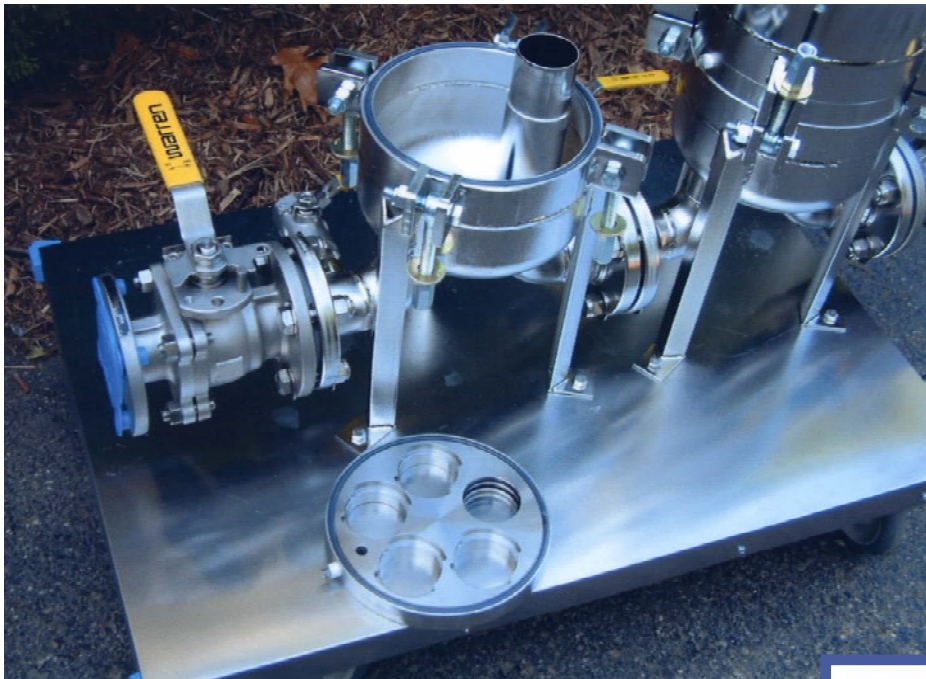
www.flowtechfilters.com

FlowTech RT 150 (CDE)  
Multi Cartridge--Removable  
Tubesheet Filter Housing



Removable Tube Sheet Filter  
Vessels. . .4-around x 30" cartridges.

[Valved and cart mounted]



Removable Tube Sheet Filter  
Vessels. . .4-around x 30"



877.375.1290

7601 Stadium Drive Kalamazoo, MI 49009

[www.flowtechfilters.com](http://www.flowtechfilters.com)