

SHEET AND LENTICULAR FILTERS

Clarification and Microbial Reduction in Beverage Applications

Primary clarification, polishing and microbiological stabilisation

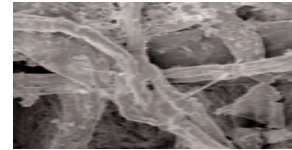
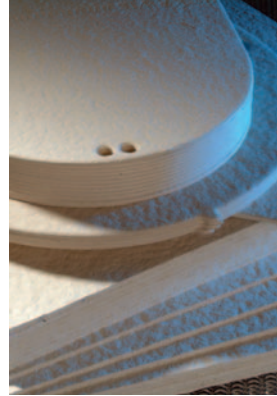
Media to suit most physical stabilisation requirements

Lenticular cartridge format for easier handling, maintenance and operation

Improved backwashable lenticular design maximises mechanical strength

Pre-compression during the manufacture of the lenticular cartridge alleviates the need for checking and tightening-down procedures

Single to 4-high lenticular housing range with 12 inch and 16 inch diameter options



Product Information

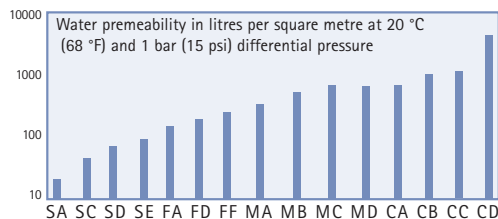
Specifically developed for the food and beverage industry, domnick hunter filter sheets can be used in applications as diverse as the clarification of honey, the decolorisation of spirits and the microbiological stabilisation of wine and beer.

The cellulose-based media are available in two forms. Flat sheets, in a number of sizes and profiles, are for installation in filter presses. Lenticular filter cartridges are for use in fully enclosed systems. In all cases, additional filter aids such as diatomaceous earth, polyvinylpyrrolidone and activated carbon may be incorporated within the media to enhance specific adsorptive effects. The media are designed to be sanitised and cleaned using hot water and a variety of chemicals. Steam sterilisation is possible for selected types.

Lenticular cartridge filters alleviate many of the maintenance and operational issues associated with sheet filter presses. Lenticular cartridges from domnick hunter also incorporate features that combat problems associated with earlier designs such as eccentricity between individual cells, poor wet strength, inability to backwash and dimensional change during use.

Flow Characteristics

Actual sizing depends on the liquid being filtered and the conditions of use, please contact your usual domnick hunter representative for advice.



FLOW TECH CORPORATION
877.375.1290
7601 Stadium Drive Kalamazoo, MI 49009
www.flowtechfilters.com

Materials of Construction

	Sheet	Lenticular Cartridge
Filtration Media	: Cellulose fibre impregnated with diatomaceous earth, carbon or PVPP filter aids	
Upstream Support Scrim	: Not applicable	Polyester
Downstream Support Frame	: Not applicable	Polypropylene
Spacing Rings and Endcaps	: Not applicable	Polypropylene
Fixing Straps	: Not applicable	Stainless Steel
Standard Gaskets	: Not applicable	Silicone

Food and Biological Safety

All components are manufactured from materials suitable for contact with food and conform to the relevant requirements of the United States FDA Code of Federal Regulations Title 21.

Lenticular Cartridge Dimensions

	12" diameter	16" diameter
Diameter	288 mm	401 mm
2 Cell Height	52 mm	52 mm
9 Cell Height	165 mm	165 mm
16 Cell Height	272 mm	272 mm

Effective Filtration Area

	Sheet	Lenticular Cartridge	
		12" diameter	16" diameter
Sheet	Up to 2 m x 1 m double sheet	-	-
2 Cell	-	0.2 m ²	0.4 m ²
9 Cell	-	1.0 m ²	2.0 m ²
16 Cell	-	1.8 m ²	3.6 m ²

Recommended Operating Conditions

	Sheet	Lenticular Cartridge
Max. Continuous Operating Temperature	120 °C (149 °F)	65 °C (149 °F)
Max. Forward Flow Differential Pressure	2.0 bar (58 psi) at 20 °C (68 °F)	2.5 bar (36 psi) at 20 °C (68 °F)
Max. Reverse Flow Differential Pressure	Not Recommended	0.5 bar (7 psi) at 20 °C (68 °F)
Hot Water Sanitisation	Max. 30 x 20 minute forward flow cycles at 85 °C (194 °F)	Max. 30 x 20 minute forward flow cycles at 80 °C (176 °F)
Steam Sterilisation	Max. 5 x 20 minute forward flow cycles at 134 °C (305 °F)	Max. 5 x 20 minute forward flow cycles at 120 °C (248 °F)

Recommended Rinse Volume

Sheet - 50 litres per square metre

Lenticular Cartridge - 6 litres per 12 inch and 12 litres per 16 inch cell

COARSE CLARIFICATION

MEDIUM CLARIFICATION

POLISHING

STABILISATION

SA SC SD SE MA MB MC MD CA CB CC CD AC PV

FLOW TECH
CORPORATION



877.375.1290
7601 Stadium Drive Kalamazoo, MI 49009

www.flowtechfilters.com



AVAILABLE
IN
SHEETS



AVAILABLE
IN 12" AND
16" DIAMETER
FORMATS

domnick hunter sheet and lenticular cartridge filters are fully identified by unique code numbers. To specify the filter type that you require, refer to the selection tables below. Due to the wide range available, only the most common options are given. Should you require help with your selection, or if the code that you require is not shown, please contact your domnick hunter representative.

Sheet Codes



Code	Dimensions (mm)
0608	200 x 200
0325	400 x 400
0131	600 x 614
0014	800 x 800
0012	1001 x 1003

Other dimensions and profiles available

Code	Retention Range
SA	Microbial stabilisation grades
SC	
SD	
SE	
FA	Fine grades
FD	
FF	
MA	Medium grades
MB	
MC	
MD	
CA	Coarse grades
CB	
CC	
CD	
AC	Activated Carbon
PV	PVPP
WA	Washable Powder Support Grade

Box Quantity
100
50
25
10

Subject to standard box quantities depending on size of sheet

Code	Diameter (inches)
16	16
12	42

Code	Number of cells
16	16
09	9
02	2

Box Quantity
2 (12 inch Dia.)
1 (16 inch Dia.)

Code	Seal
E	EPDM
N	Nitrile
P	PTFE
S	Silicone
V	Viton

Lenticular Codes









877.375.1290
7601 Stadium Drive Kalamazoo, MI 49009

www.flowtechfilters.com

domnick hunter limited has a continuous policy of product development and although the Company reserves the right to change specification, it attempts to keep customers informed of any alterations. This publication is for general information only and customers are requested to contact our Process Filtration Sales Department for detailed information and advice on a products suitability for specific applications. All products are sold subject to the company's Standard conditions of sale.